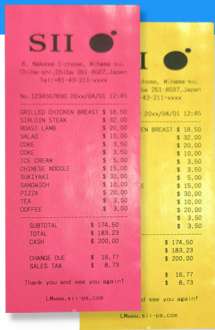


SLP720RT/721RT Series

- Linerfree Label, Label, and Receipt Printer
- High-Quality Output
- Compact and Stylish Design
- Fast Printing Speed Label





PRODUCT HIGHLIGHTS:

- Certified high-quality linerfree / lined label, receipts
- Compact design that supports 40mm and 58mm media
- Partial cut and full cut options with ticket taken sensor
- Back feed feature to minimize paper usage
- Seiko product reliability

HIGH-QUALITY PRINTING

With the SLP720RT/721RT Series, we have worked with the best of the best, including Iconex, Maxstick, StickyPOS, to make sure this label printer can produce the best Linerfree and Liner labels and receipts. Designed for industries like Hospitality, Retail, Visitor Management, Manufacturing, the labels/label printers are very flexible for any application. In addition, the quality of different labels, both in adhesives and color options, makes for a great solution.

SPEED AND EFFICIENCY

The SLP720RT/721RT Series were designed to support applications with continuous on-demand output. The paper taken sensor combined with the partial cut allows for one ticket at a time usage. With a print speed of 200mm/sec, your next ticket is delivered in a blink of an eye. The back feed feature allows you to reverse feed the paper after each cut, reducing paper usage.

EASY SOFTWARE SUPPORT

We understand integration to your software is the key to a great solution. Seiko's developer portal provides easy-to-use SDK's making us a seamless partner to work with to create your solution, whether Windows, Android, or iOS. We also have multiple interface/communications options with the printer to make for a solution for any environment.

Model		SLP720RT	SLP721RT
Printing	Method	Thermal line dot printing	
	Number of dots/line	203	
	Resolution (dots/mm)	8	
	Paper width (mm)	Restick liner-free label, Receipt paper : 40 , 58 Label (Liner width) : 31 to 58	
	Printing width (mm)	Restick liner-free label, Receipt paper : 36 , 54	
	Speed (mm/sec) max	200	
	Outside diameter of paper roll (mm) max	φ 102	
	Character matrix (HxW mm)	24 x 12, 24 x 24, 16 x 8, 16 x 16	
	Character dimensions (HxW mm)	3.0 x 1.5, 3.0 x 3.0, 2.0 x 1.0, 2.0 x 2.0	
Type of Paper	Media Type	Restick liner-free label, Receipt paper, Label with liner Roll paper (Drop in)	
	Top margin (mm) min	4	
	Paper sensor	Out of paper sensor, Timing mark sensor, Label taken sensor	
Character type		Code page (18Pages), International character, Optional font, Downloaded character, JIS 1&2 Level Kanji, Special character, User-defined character	
Bar code		UPC-A/E, JAN(EAN)8/13, ITF, CODABAR, Code39, Code93, Code128, QR code, PDF417, Maxi code, Data matrix, GS1 Databar	
Power supply		Specified AC adapter, External power (DC24±10%)	
Communication interface		USB, Ethernet+USB, Wireless LAN	Bluetooth + USB
Command		ESC/POS™(Standard mode) conformity	
Cutting method		Slide type	
Cutting type		Full cut, Partial cut (Leave center point)	
Operating Temperature (°C)		5 to 45	
Service life	Paper cutting (cut)	Restick liner-free label, Receipt paper: 1,000,000*1 Liner label: 300,000*1	
Dimensions (WxDxH mm)		90 x 200 x 141*2	
Mass (g)		Approx. 1100	
Standard		FCC, CE, UKCA, VCCI	
Software*3		Windows®: Printer Driver / OPOS / POS for .NET / Utility / Layout Editor / Smart Label Creator Android™: Printer Class Library / URL Print Agent / Layout Editor / Smart Label Creator / MAUI SDK / Utility iOS: Printer Class Library / URL Print Agent / Layout Editor / Smart Label Creator / MAUI SDK / Utility	

*1 Use recommended thermal papers. *2 Excluding protrusion *3 Please see "Associated software tool" for details.
ESC/POS™: Registered trademark of SEIKO EPSON CORP.
Windows® is the registered trademark of Microsoft Corporation(USA).
Android™ is a trademark of Google Inc.
iPad, iPhone, iPod are trademarks of Apple Inc., registered in the U.S. and other countries.
iOS is a trademark or registered trademark of Cisco in the U.S. and other countries and is used under license.



Interface	
Interface	Model
USB	SLP720RT-U
Ethernet+USB	SLP720RT-E
Wireless LAN	SLP720RT-W
Bluetooth+USB	SLP721RT-B



Seiko Instruments U.S.A., Inc.

21221 S. Western Avenue, Suite 250
Torrance, CA 90501
Tel: 310.517.7778
Fax: 310.517.8154
E: printerinfo@seikoinstruments.com
W: www.sii-thermalprinters.com